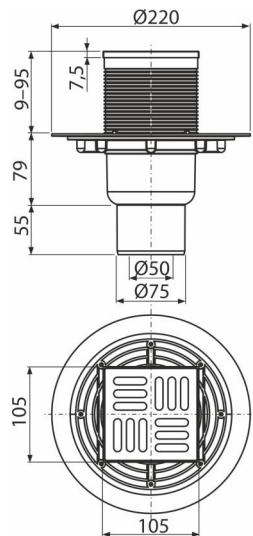


APV201

Floor drain 105×105/50/75 mm straight outlet, stainless steel grid, wet odour trap



Application

For the interior, where will be frequent use associated with the regular water

runoff into the floor drain (bathrooms)

For draining a single shower at floor level

For wheelchair access

Features

- Solid brass grid 102×102×4 mm
- Height adjustable throat 9–95 mm
- Wide insulation collar for connection to waterproofing construction
- Direct connection to waste Ø50/75 mm
- Mechanically cleanable trap up to the waste pipe
- Wet odour trap prevents the penetration of odours from the sewer
- Compatibility with floor drains parts including wet, dry and combined odour trap SMART
- Material: polypropylene resistant to mechanical, chemical and thermal damage
- Material: stainless steel AISI 304, DIN 1.4301

Scope of supply

- Drain body Ø50/75 mm, straight outlet
- Floor drain throat 105×105 mm
- Design stainless steel grid
- Wet odour trap
- Seal kit

Order number, Logistic information

Code	EAN	Weight (piece packing palett)	Dimensions (piece packing)	Quantity (packing palett)
APV201	8594045930375	0,99 7,89 177,8 kg	230×190×230 780×245×475 mm	8 160 pcs

Warranty

2/6 years *

Norms

EN 1253

Technical specifications

- Flow of the inlet grid 46 l/min
- Odour trap 51 mm
- Resistance of odour trap against the pressure 480 Pa
- Load class K3 300 kg
- Waste pipe diameter 75/50 mm
- Total installation height 144-230 mm