

APZ18-650M Simple

Shower drain with a stainless steel edge for perforated grids

Application

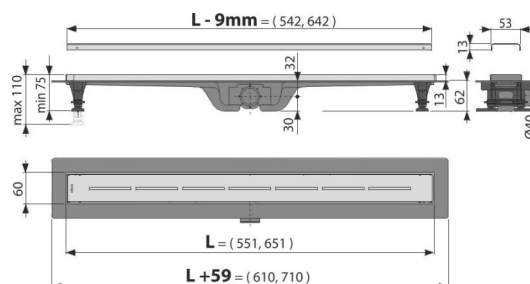
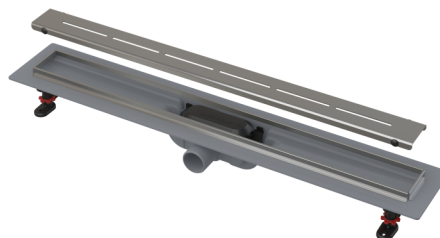
- For indoor use
- For drainage of floor-level showers
- For installation into open spaces or near the wall of the shower area
- For wheelchair access

Features

- Plastic shower drain with stainless steel edge, which is tightly fixed around the circuit
- They are made of highly durable plastic that resists frost and chemistry
- Installation height from 62 mm
- Adjustable plastic anchoring legs 0–35 mm allowing fast and convenient installation, including the precise setting of the required level
- High resistance against chemicals
- Secure connection to the construction waterproofing system
- The combined odour trap (own protected patent solution) provides protection against the odours from the sewage even after the water dries out from the trap
- Mechanically cleanable trap up to the waste pipe
- Grid is included in packaging
- Self-adhesive tape for quality waterproofing
- Material: polypropylene filled with talc resistant to mechanical, chemical and thermal damage

Scope of supply

- Linear shower drain
- Fixation set: screw $\varnothing 4,2 \times 38$ – 4 pcs, dowel $\varnothing 8$ – 4 pcs
- Self-adhesive waterproofing tape
- Dismantling hook
- Stainless steel perforated grid Simple 8 in matt with a protective film
- Fixation set for attaching the adjustable legs: screw 4.2×9.5 – 4 pcs
- Combined odour trap SMART
- Height adjustable feet 2 pcs



Order number, Logistic information

Code	EAN	Weight (piece packing palett)	Dimensions (piece packing)	Quantity (packing palett)
APZ18-650M	8595580556594	650 mm 1,58 70,89 161,8 kg	765x80x145 1176x768x410 mm	45 90 pcs

Warranty

2/6 years *

Norms

EN 1253

Technical specifications

- Odor trap combined with a water seal 29 mm
- Flow of the inlet grid 27 l/min
- Resistance of odour trap against the pressure 640 Pa
- Waste outlet diameter 40 mm
- Minimum thickness of concrete 62 mm
- Total installation height 75-110 mm
- Load class K3 300 kg